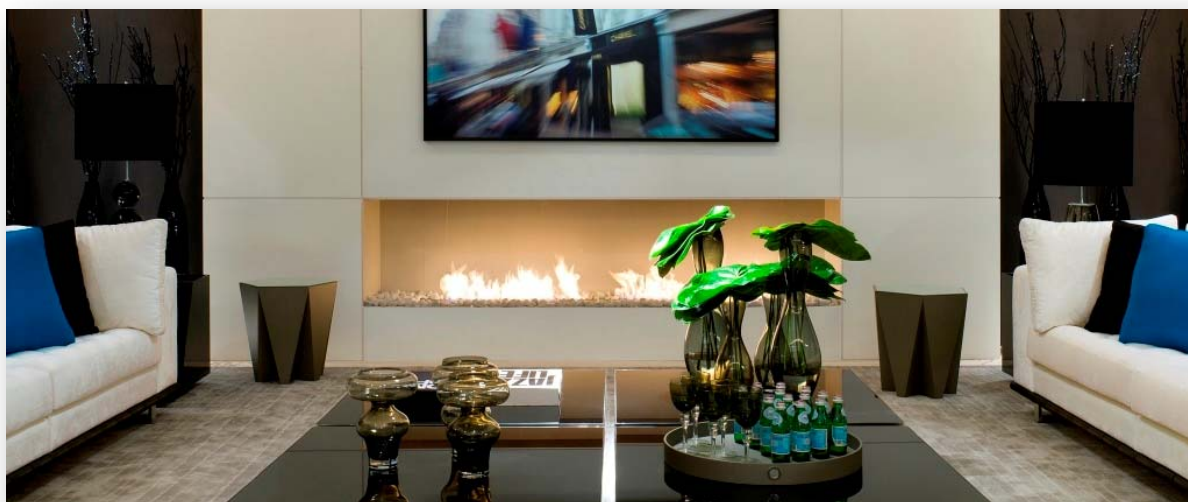


**Remote controlled Ethanol Burner (150 cm 59,06 in)**  
**Electronic ignition and security detectors**

1. Technical data
2. Dimensions
3. Minimum dimensions of safety
4. Operating Procedure



1



*Controls*

Remote control, On/off button

Dry contact for home automation applications & remote control via Smartphone or remote commands



*Ignition - Power*

Automatic and secured ignition through low-voltage electronic induction electrodes

Feed pumps with high-tech membranes

**TECHNICAL DATA BX150**  
**Remote controlled Ethanol Burner (150 cm 59,06 in)**  
**Electronic ignition and security detectors**



*Security*

Electronic sensors that automatically halt the unit in case of malfunction  
(CO<sup>2</sup>, heat, levels, tank gauge, etc.)



*Standards*

All Acquisitions devices comply with the following safety standards:  
CE (Europe), FCC (USA), IC (Canada)

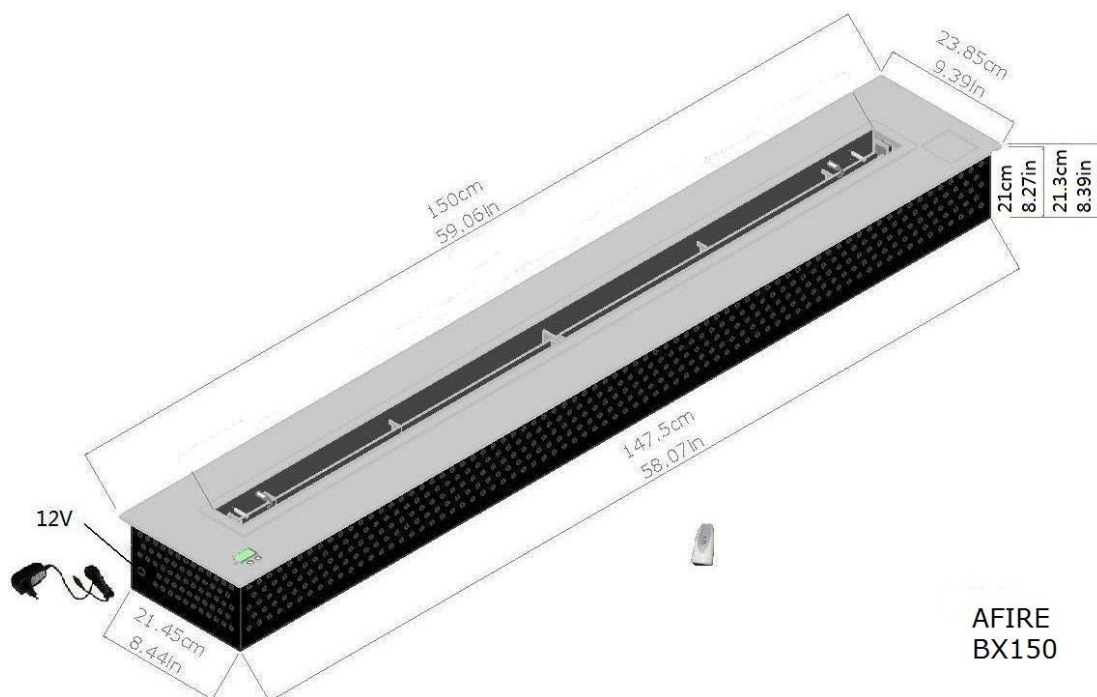


*BX150 data*



Dimensions: 150 / 24 / 21,3 cm (59,06 / 9,39 / 8,38 in)  
Output: 10 000 W (34 000 BTU)  
Capacity of the tank: 15 L (4 Gal)  
Consumption: 1,65 liter/hour (0,44 Gal/hour)  
Weight: 38 kg (75 Lbs.)

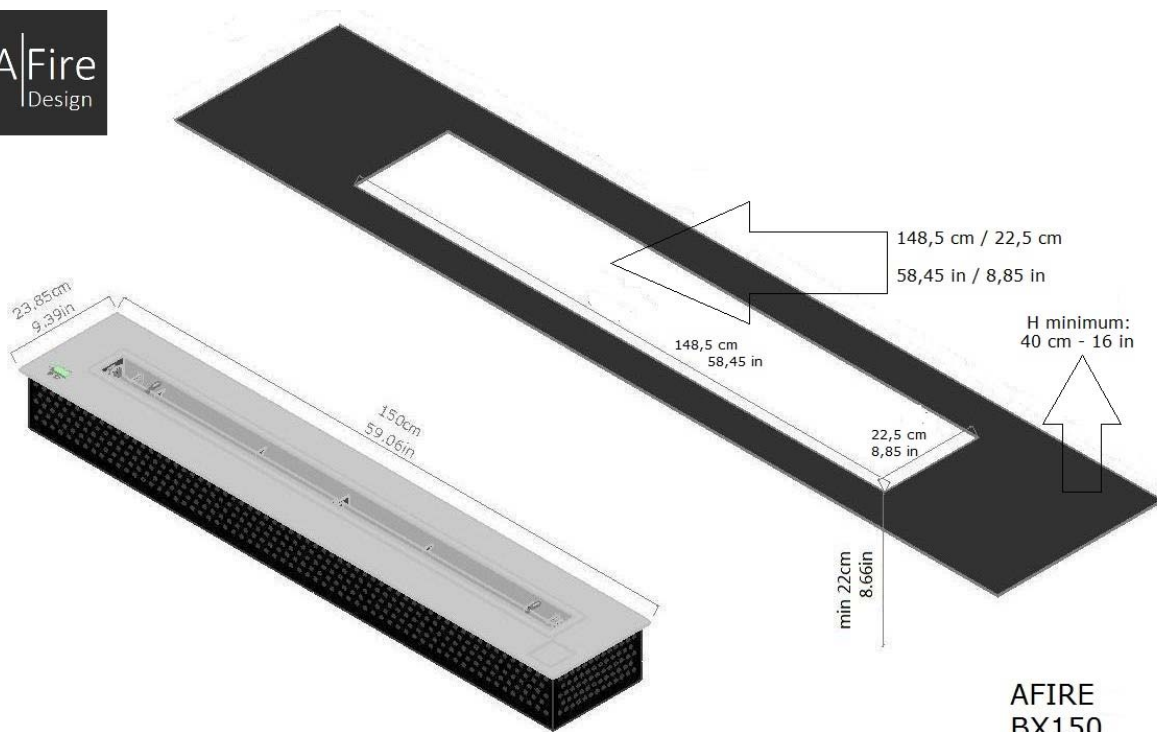
# **TECHNICAL DATA BX150** **Remote controlled Ethanol Burner (150 cm 59,06 in)** **Electronic ignition and security detectors**



AFIRE  
BX150

Minimum dimensions of safety with non-combustible materials

Above: 400 mm; 16 inches. Edges: 80 mm; 3,2 inch. Back: 60 mm 2,5 inch.



AFIRE  
BX150

Operating procedure

**Remote controlled Ethanol Burner (150 cm 59,06 in)  
Electronic ignition and security detectors**

**A. Power supply**

Connect the provided 12V adapter



4

**B. Tank filling**

Only use denatured ethanol 95 – 97%.

Press on the button **2**

The door is unlocked, open the door, remove the cap and fill the tank with a funnel.

When the tank is full, a beep warns you and a message is displayed on the LCD screen.

Put the cap back on and close the door of the tank.

After a few seconds the door will be automatically locked



Never fill the burner directly, fill the ethanol tank

**C. Press on the remote control, the on/off switch (1) or the remote button to ignite or switch off the burner**



on/off switch



tank opening **2** **1** on/off switch



dry contact for home automation